



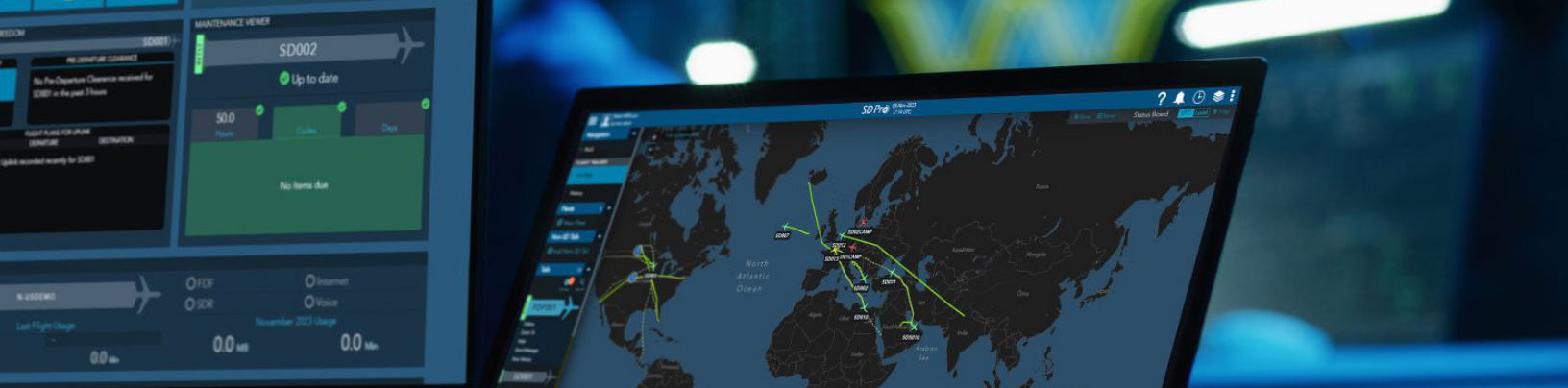
SD Pro Overview

The integrated flight operations management platform



connect@gogoair.com
+1 303.301.3271





The ultimate source of data for your flight department

SD Pro is the leading communications and operations platform in business aviation. It delivers all key information in a centralized ecosystem for more data-driven, timely decisions. It's a customizable platform that optimizes workflows and simplifies communication across your operations.

Features & Benefits

- A fully integrated mobile platform
- Unlimited users
- Real-time insights
- Push notifications
- Account management
- Security alerts
- Carbon emission reporting
- Cloud-based and responsive
- Highly customizable interface with simple drag and drop format
- Delivers flight planning, flight tracking, flight data, connectivity monitoring/forecasting, maintenance tracking, threat monitoring, and third-party integration partners – all via a single access point

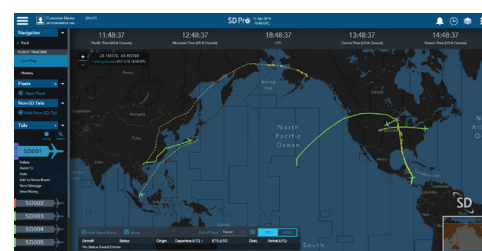
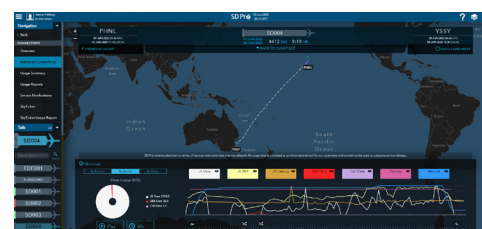
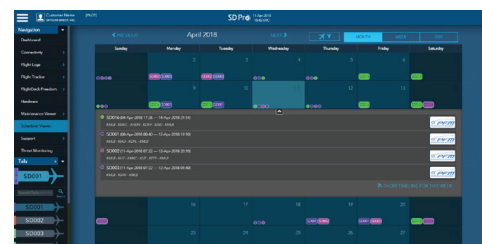
SD Pro keeps the flight department in sync with the aircraft

Gogo's revolutionary SD Pro technology compiles the critical information your flight department needs and displays it in near real-time, all from a single login. Your flight operation can access multiple resources from their personalized SD Pro dashboard, saving time, effort and money.

A simple, fast and secure way to view and manage your aircraft information

Designed as an Open Architecture platform, SD Pro is modular and flexible to fit the unique necessities of flight departments around the world. With integrated services, standalone solutions, third-party integrations, and dynamic dashboards – all backed by our secure network infrastructure – SD Pro lets you customize the management of your operation.

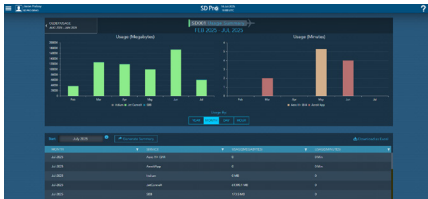
SD Pro advanced data tracking and management capabilities create a reliable, historical record for the life of the aircraft. It can help save money by accurately capturing component utilization information down to the minute. It's the one tool you can use to bring together required information for your entire team.



Modules and Capabilities



Dashboard. The dashboard is designed to be customized to fit the needs of the flight department. Each user can configure their personal dashboard to display modules based on their role in the flight department.



Connectivity. Displays connectivity status for all services, provides usage alerts and notifications, and tracks voice and data usage by month, flight and duration. Reports can be downloaded for offline analysis and distribution. Includes SkyTicket to allow operators to assign time and/or data allotments to end users aboard the airplane.



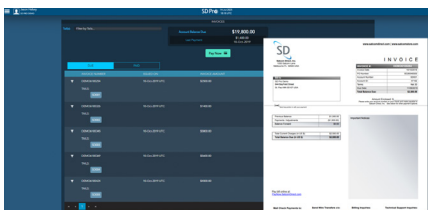
Advanced Connectivity Advanced Connectivity offers users the ability to forecast connectivity for their flight plan with predictive mapping. It also allows users to view live and historic data pertaining to the service performance.



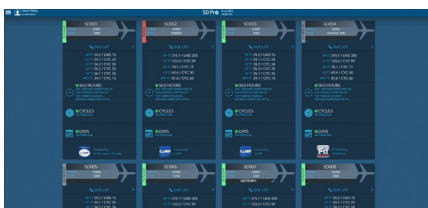
Cyber Threat Monitoring Real-time view of network security, potential threats, identified incidents, and actions SD has taken to protect data.



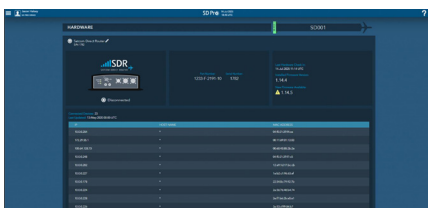
FlightDeck Freedom® (FDF) Self-service of all configuration items, alerts, messages and notifications. Users can send messages to the flight deck as well as view and download historical datalink reports.



Invoices Ability to view and settle SD invoices quickly and easily in one simple location. It displays a history of settled statements, as well as due date status.



Maintenance Viewer View due list feeds from various maintenance providers along with times and cycles for each aircraft. Includes airframe, engine and calendar items in both a multi-aircraft overview or a per aircraft detailed view.



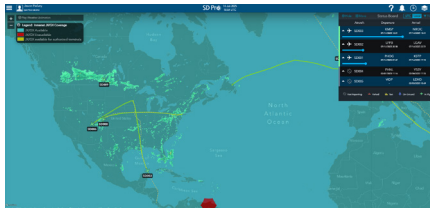
Hardware: Shows status of the onboard hardware including available networks and connection status. Tracks device connectivity and usage, also available via the SD Cabin mobile application. Hardware is a powerful source of aircraft data, enabling the full functionality of SD Pro.



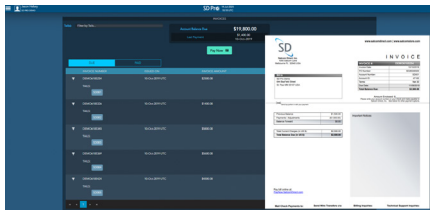
Flight Logs: Auto-captures flight data and cycle events, in real-time, reducing manual user input. Provides visibility of flight log information to the entire flight operation. Data capture powered by FlightDeck Freedom and Hardware. Users have the ability to update 3rd party maintenance tracking partners directly from SD Pro.



Flight Tracker: Real-time flight tracking including departures, destinations, ETA, altitude, and speed information. At-a-glance status view shows weather overlays, worldwide satellite imagery, and coverage maps for all available connectivity services.



Carbon Reporting: Module Leveraging the data provided by Flightdeck Freedom, SD Pro automatically calculates carbon emissions at the aircraft and fleet level. Users have the option to purchase carbon offset credits through 3rd party integrations.



Gogo DASH: Navigate to the Gogo DASH platform, currently available to all aircraft connected via an AVANCE LRU.

Integrations

SD Pro integrates with leading providers, eliminating duplication of efforts in various portals.



Availability

SD Pro is currently available to all connected aircraft operating via an SDR / SDRG router.

Accessibility

Accessible via desktop, laptop or mobile device, on the ground and in the air.

If you're an existing customer and need to request access, please contact support at:

+1 321.777.3236

+1 888.448.9003

support@satcomdirect.com

